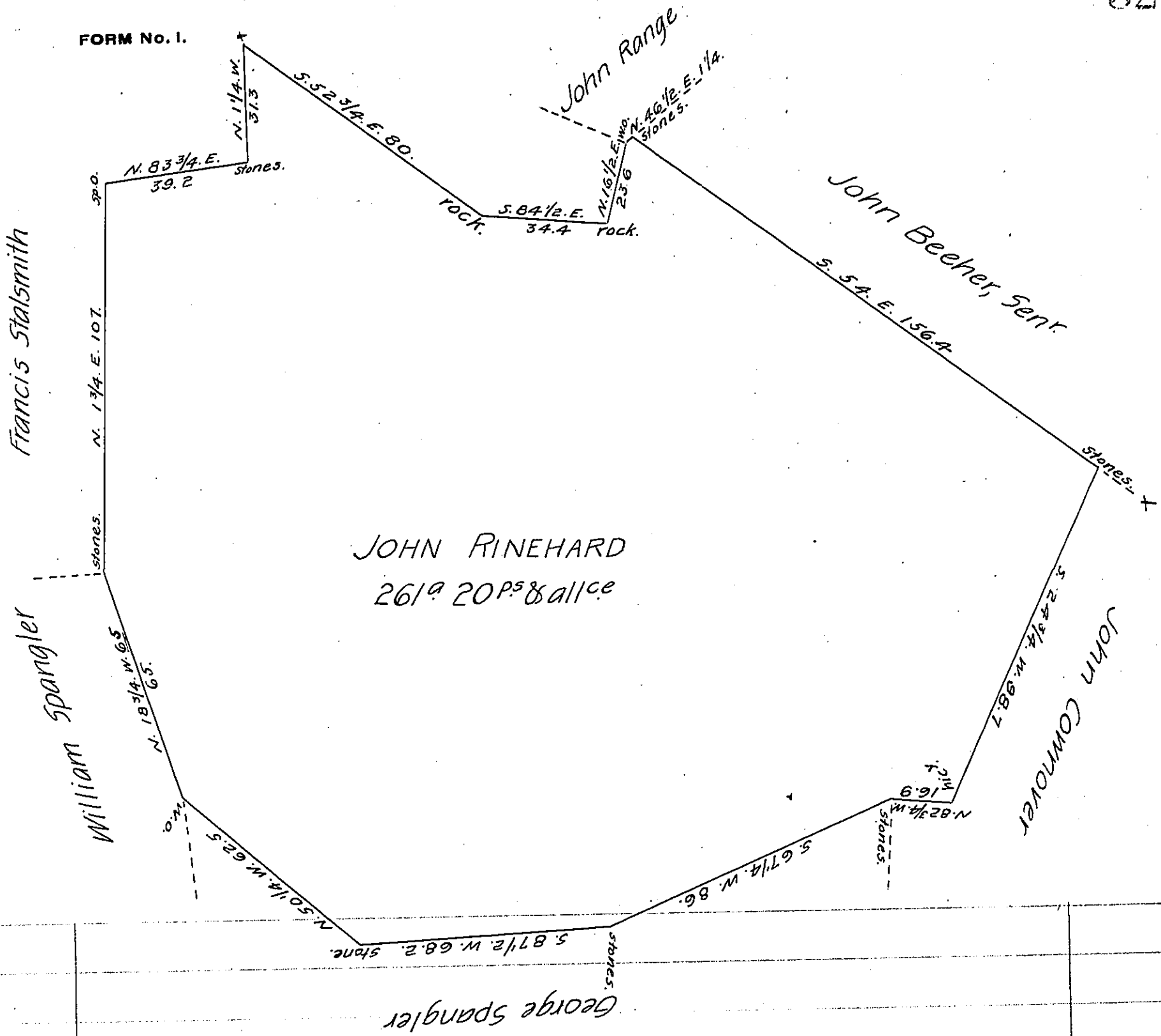


FORM No. 1.



JOHN RINEHARD
261^a 20P^s & allce

Situate in Strabane Township, Adams County, Surveyed January 17th 1811. In pursuance of a warrant granted to John Rinehard for 250^a dated October 4th 1810. Containing two hundred & Sixty one acres, twenty perches & allce.

By Sam^l Sloan, D. S.

To Andrew Porter, Esq^r
Surveyor General.

IN TESTIMONY that the above is a copy of the original remaining on file in the Department of Internal Affairs of Pennsylvania, made conformably to an Act of Assembly approved the 16th day of February, 1833, I have hereunto set my Hand and caused the Seal of said Department to be affixed at Harrisburg, this fourth day of September 1906.

Loac R. Brown
Secretary of Internal Affairs.